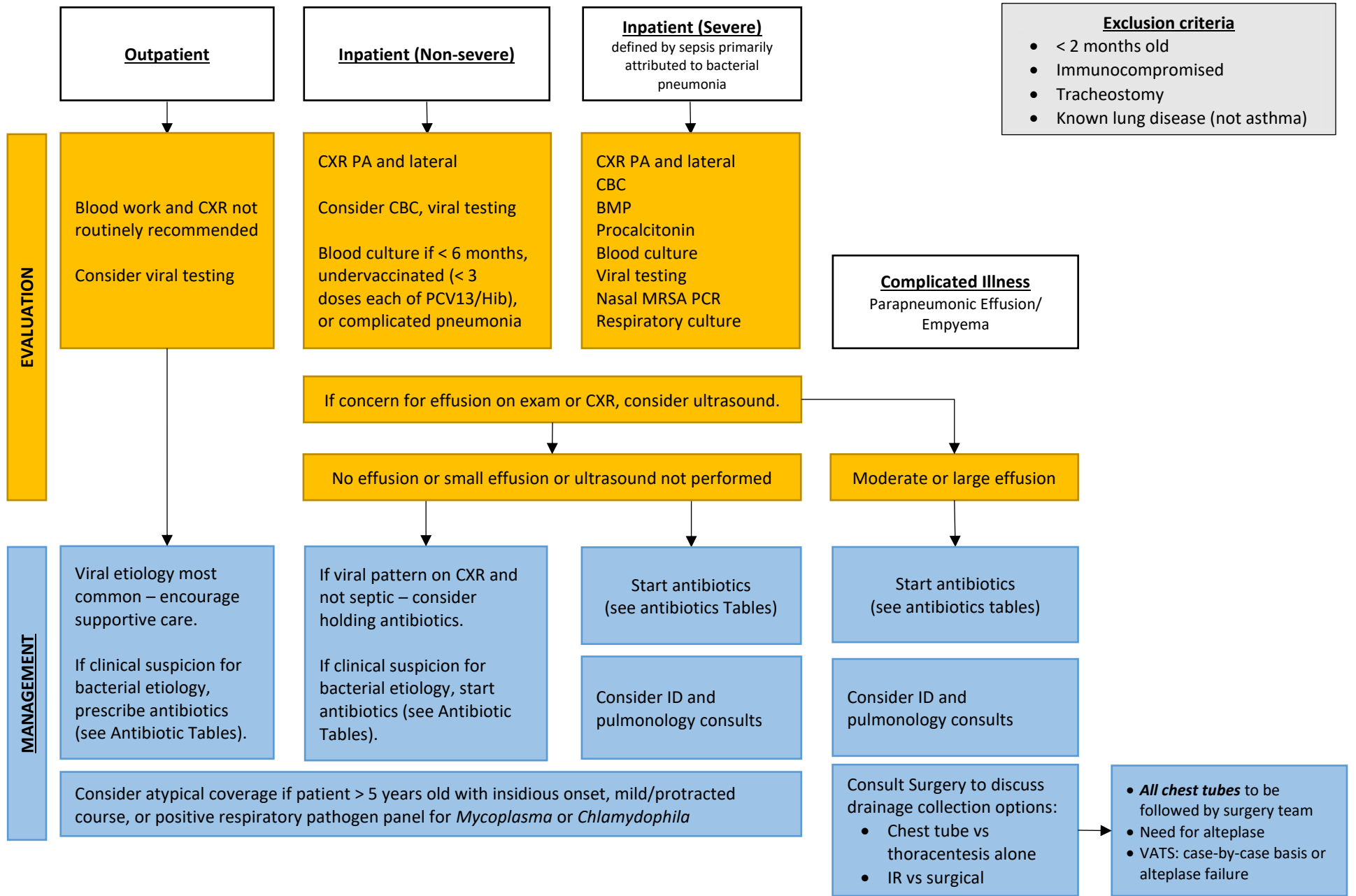


# Community Acquired Pneumonia



Alteplase dosing: 0.1 mg/kg (max dose: 4 mg) in 10-30 ml normal saline  
Instill in chest tube for 45-60 min Q12-24 h x 3 doses

Created by	Department	Creation Date	Version Date
E. Keller, R. Oram	Pediatric Antimicrobial Stewardship	April 2021	June 2024

## Community Acquired Pneumonia

### Empiric Antimicrobial Selection and Duration

Pneumonia classification	Inpatient	Outpatient	Duration
Outpatient Vaccinated Undervaccinated <sup>1</sup>	N/A	Amoxicillin Amoxicillin-clavulanate	5 days
Inpatient (Non-Severe) Vaccinated Undervaccinated <sup>1</sup>	Ampicillin Ceftriaxone	Amoxicillin Amoxicillin-clavulanate	5 days <sup>4</sup>
Inpatient (Severe) or Complicated <sup>2</sup>	Ceftriaxone *Add vancomycin if clinical suspicion for MRSA or septic shock	Amoxicillin-clavulanate	Case-by-case basis
Atypical	Azithromycin	Azithromycin	3 days
Influenza	Oseltamivir	Oseltamivir	5 days
Beta-lactam allergies Amoxicillin/Penicillin Cephalosporin	Ceftriaxone Case-by-case basis	Cefuroxime or cefpodoxime Levofloxacin <sup>3</sup>	Based on pneumonia classification

<sup>1</sup>< 3 doses each of PCV13/Hib and/or < 6 months <sup>2</sup>Order nasal MRSA PCR <sup>3</sup>Consider vaccination status and severity of illness. Consider ID consult. <sup>4</sup> Same RG, Amoah J, Hsu AJ, et al. The Association of Antibiotic Duration with Successful Treatment of Community-Acquired Pneumonia in Children. *J Pediatric Infect Dis Soc.* 2021;10(3):267-273. doi:10.1093/jpids/piaa055

### Intravenous (IV) Antibiotic Dosing

Antibiotic	Weight Based Dose (mg/kg/dose)	Maximum Dose (mg)	Interval (hr)
Ampicillin	50	2000	Q6
Ceftriaxone	50	2000	Q24
Vancomycin <sup>1</sup>	20	1500	Age > 4 weeks to < 1 year: Q8 Age 1 to 6 years: Q6 Age > 6 years: Q8

<sup>1</sup>Requires dose adjustment for acute kidney injury/renal failure

### Oral Antimicrobial Dosing

Antimicrobial	Weight Based Dose (mg/kg/dose)	Maximum Dose (mg)	Interval (hr)
Amoxicillin <sup>1</sup>			
Outpatient	45	1000	Q12
Inpatient Non-Severe	30	1000	Q8
Amoxicillin-Clavulanate <sup>2</sup>		Based on formulation: 875 (tablets) or 900 (suspension)	Q12 Q8
Outpatient/Inpatient Non-severe	45		
Inpatient Severe	30		
Cefpodoxime	5	200	Q12
Cefuroxime <sup>3</sup>	15	500	Q12
Azithromycin	10	500	Q24 x 3 doses
Levofloxacin	10	750	Age ≥ 6 months to < 5 years: Q12 Age ≥ 5 years: Q24
Oseltamivir		<b>Dose (mg)</b>	
≤ 15 kg <sup>5</sup>		30	Q12
>15 to 23 kg		45	
>23 to 40 kg		60	
> 40 kg		75	

<sup>1</sup>Use 400mg/5mL suspension or 500mg tablets <sup>2</sup>Use 600mg-42.9mg/5mL suspension or 875mg-125mg tablet <sup>3</sup>Only tablet formulation available. Do not crush. Crushed tablet has strong, persistent, bitter taste. <sup>4</sup>Use capsules when possible. Oral suspension has bitter taste. <sup>5</sup>For patients ≤ 8 months of age, oseltamivir dose is 3mg/kg/dose q12h, max 30mg/dose.

Created by	Department	Creation Date	Version Date
E. Keller, R. Oram	Pediatric Antimicrobial Stewardship	April 2021	June 2024