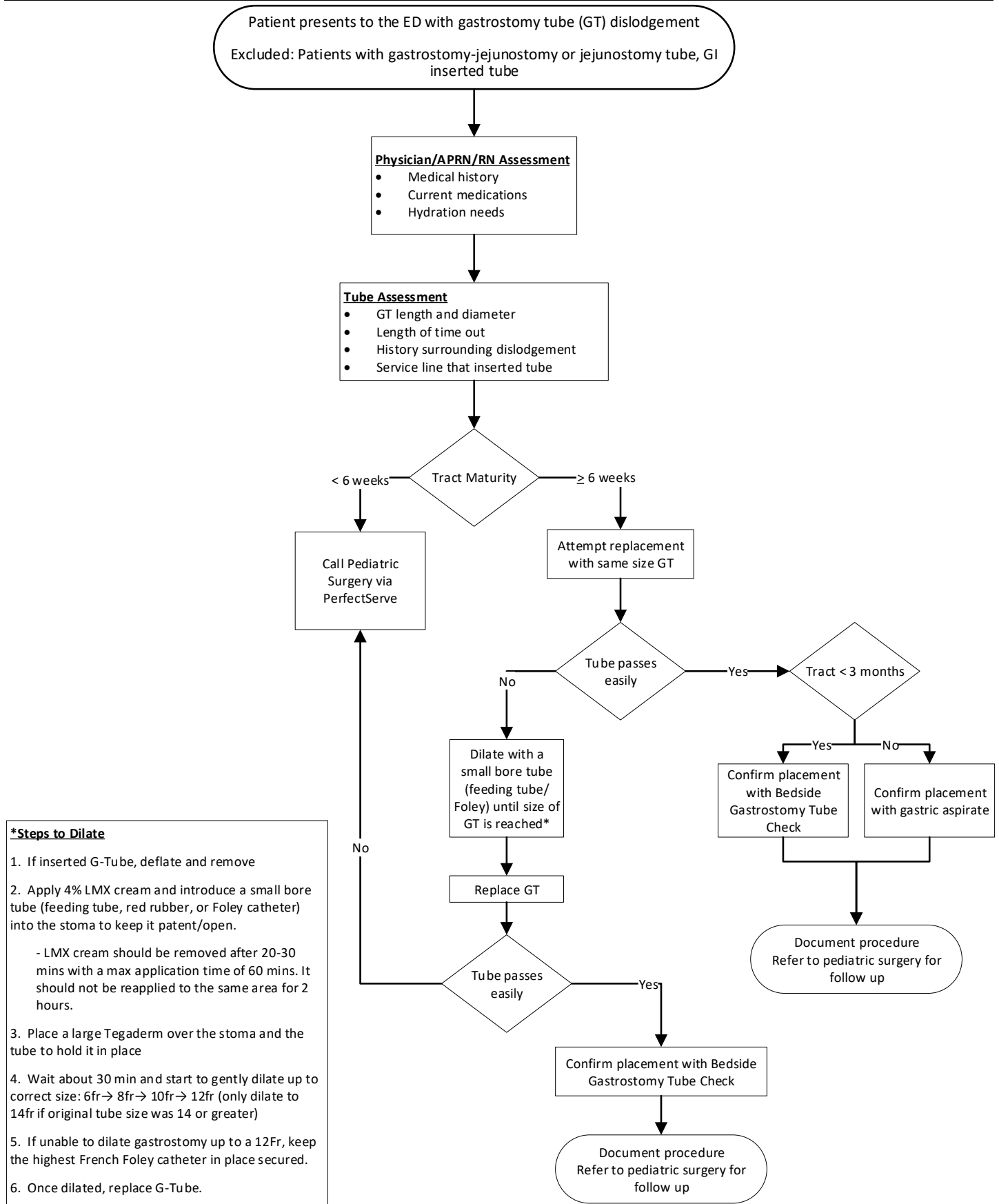


Gastrostomy Tube Evaluation (ED only)



Created by	Department	Creation Date	Version Date
K. Lubke, J. McCarthy, K.Rowland, B.Slater, M. Doliner	Pediatric Emergency Department	04/2021	09/2023

Gastrostomy Tube Placement Check (Imaging)

Order:

1. XR GASTROINTESTINAL TUBE CHECK WITH CONTRAST
2. RIS CONTRAST ORDER SET => XRAY CONTRAST ORDERS => Iohexol (OMNIPAQUE 240) contrast solution
=> specify dose

Images:

X-ray technologist will perform the study portably at bedside

- 1st image: Lateral view obtained during the injection
- 2nd image: Frontal supine view immediately after the injection
- 3rd image: Frontal supine view ~1 min later, after the post-injection view

Injection:

Contrast can be administered via the enteric tube by a clinical team member (MD, APN, PA, RN)

Contrast volumes:

- Neonates and low birth weight infants < 5 kg – feed volume or 2-3mL/kg Omnipaque 240 up to 15 ml maximum volume
- Infants and children weighing 5 kg – 10kg – 2-3mL/kg Omnipaque 240 up to 20 mL maximum volume.
- Infants and children > 10 kg – 2-3mL/kg Omnipaque 240 ➤ 10-40 kg - up to 30mL - maximum volume
 - 40 kg - up to 50mL - maximum volume

Reviewers:

Created by	Department	Creation Date	Version Date
K. Lubke, J. McCarthy, K.Rowland, B.Slater, M. Doliner	Pediatric Emergency Department	04/2021	09/2023